

# Safety and Logistics Support Update

Dan Hodkinson  
Field Operations Manager  
Carbon Cycle and Ecosystems Office  
[daniel.j.hodkinson@nasa.gov](mailto:daniel.j.hodkinson@nasa.gov)  
240-994-8750

# Safety and Logistics Support

- Overall Support
  - Available to all locations and projects
- Fairbanks Logistics Hub
  - Additional resources for those located in the interior of Alaska
- NWT Logistics Hub
  - Additional resources for those located in the NWT region

*If you require additional resources but are not located near a logistics hub, contact us and we will do our best to dispatch resources accordingly or help you find a solution.*

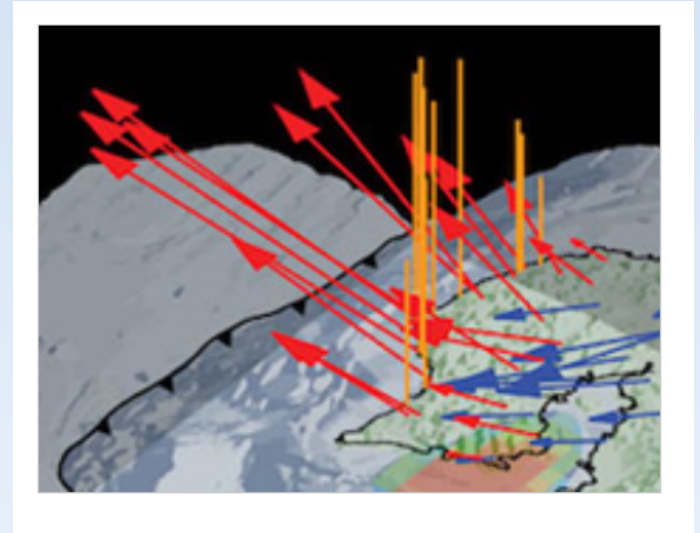
# Overall Support

- UNAVCO GPS
- Research Permits
- Website Resources
  - Hazard Assessment and Training Plans
  - Safety Library
- Training Courses



# UNAVCO GPS

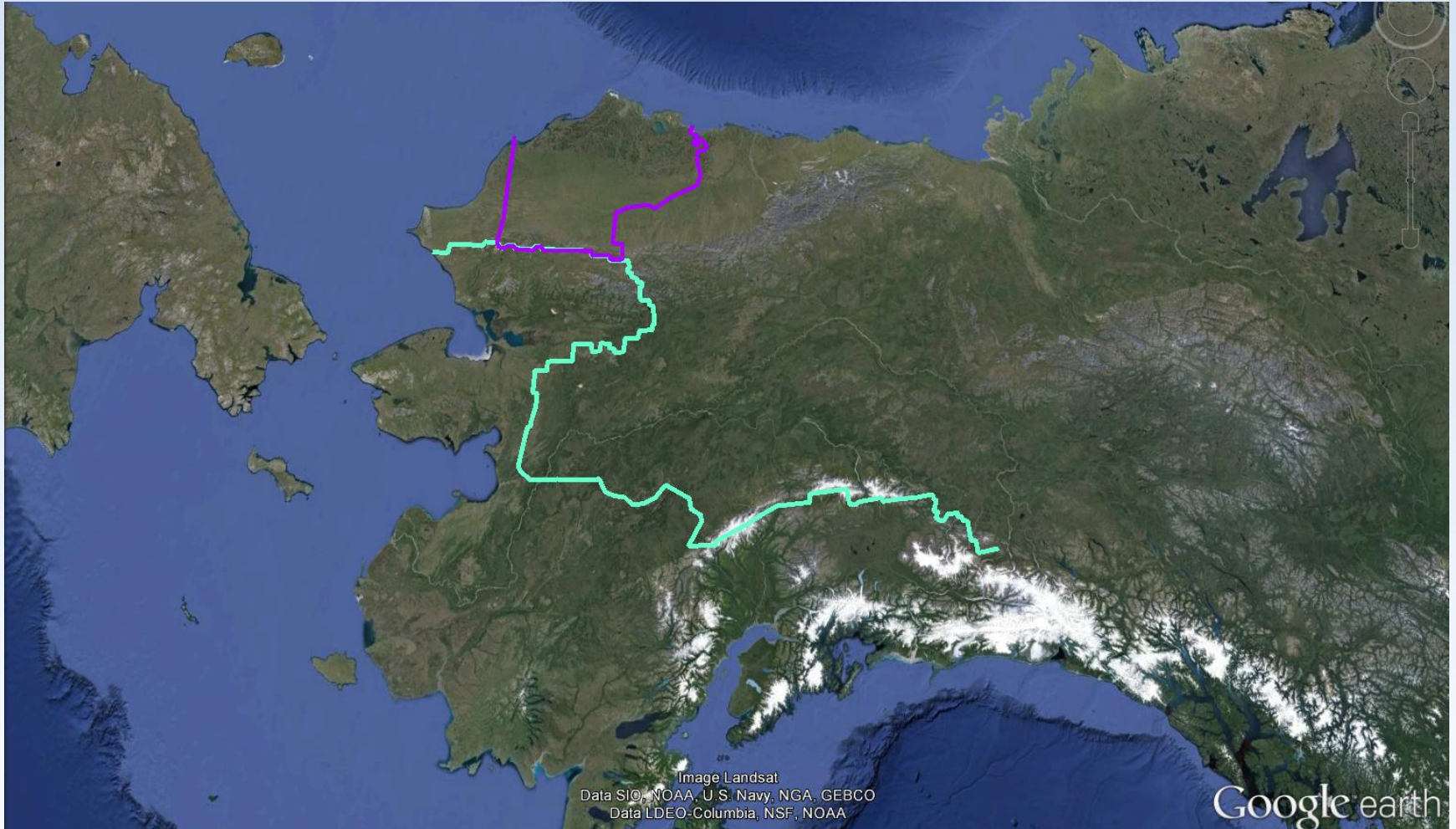
- UNAVCO will provide a dedicated GPS receiver pair for the duration of ABoVE



- UNAVCO will loan us the supporting hardware
  - portable enclosures, batteries, solar charging systems, etc.
- Equipment training available with UNAVCO technicians



# Permits Office Boundaries



# BLM Permits in Fairbanks

Fairbanks and Toolik Field Station Permits

Contact:

Robin Walthour  
Realty Specialist  
Central Yukon Field Office  
1150 University Avenue  
Fairbanks, Alaska 99709  
[rwalthour@blm.gov](mailto:rwalthour@blm.gov)  
(907) 474-2304

# Research Permits

- *National Petroleum Reserve in Alaska (NPRA) in Barrow* – relatively easy but also requires permits with the North Slope Borough
- BLM Anchorage is also responsible for Seward peninsula and North of Red Dog Mine
- *Native Lands* – Often require site visits and face to face discussions

# Research Permits

*Teams operating or flying near native communities will need to consult with those communities:*

- *Flights disturbing subsistence activities, etc.*
- *Research infrastructure affecting travel routes, etc.*
- *Consultation may need to take place at the Tribal Council level or the community level or both.*



# Hazard Assessment Form

- PI responsibility to identify hazards of team
- How to access it?
  - Log in to ABoVE 'My Account'

Sign In | My Account | Sign Out

## Sign In

TERMS OF USE: Content that is NASA sensitive, proprietary or under export control (e.g. ITAR/EAR) should not be uploaded to this website. By accessing this resource, you are consenting to these terms of use.

Website Accounts: one username/password needed for the following websites:

- ▶ North American Carbon Program (NACP)
- ▶ NASA Carbon Cycle and Ecosystems (CC&E)
- ▶ NASA Terrestrial Ecology (TE)
- ▶ NASA Carbon Monitoring System (CMS)
- ▶ NASA Arctic-Boreal Vulnerability Experiment (ABoVE)

username:

(email address)

password:

(Remember to sign out)

[Forgot Username or Password?](#)

[Create an Account](#)

**What can you do with your website account?**

- ▶ Receive ABoVE relevant announcements and other informative emails
- ▶ View/Update your account information
- ▶ Change your password

- Email [safety@cce.nasa.gov](mailto:safety@cce.nasa.gov) with any problems or questions
- Hazard Assessment generates individual safety training plans for each team member

# Hazard Assessment Form

- Needed to do field work legally and safely.
- Complete your team's assessment in advance to schedule training prior to field work.
- CCE Office cannot help plan training without it.

# Website Resources

## Field Operations — Safety and Logistics

---

It is important to plan for safety and logistics prior to departing for the field. While the Principal Investigators (PI) are responsible for their field operations, the CCE Office will be coordinating various logistical needs and safety resources.

- ▶ [Hazard Assessment/Safety Training](#)
- ▶ [Planning your trip](#)
- ▶ [Logistics Support](#)
- ▶ [Safety Library](#)
- ▶ [Research Permits](#)

Please [Contact us](#) with any questions.



## Safety Library

*Disclaimer:* NASA does not endorse any of the below videos, links, or documents. The information is provided by the CCE Office for the purpose of providing additional safety material that could be helpful working in the field. These documents/videos are not a replacement for training.

Emergency Management/ First Aid



Planning/Packing



Vehicle



Fire



Bear Awareness



Boat



Chainsaw



Ice Travel



ATV



Snowmachine



Aircraft



Land Navigation



## Bear Awareness



[Bear ID Brochure](#) (Center for Wildlife Information)

[Bear in Mind Brochure](#) (Alberta)

[Bearspray vs. Bullets Article](#) (U.S. Fish and Wildlife Service)

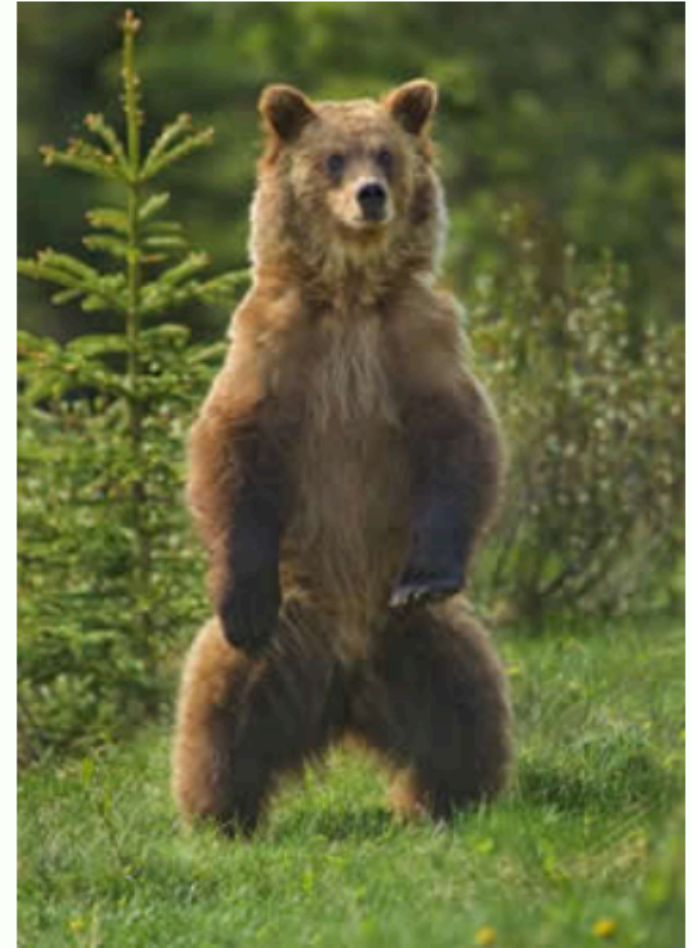
[Non-Lethal Methods Guidebook](#) (Sylvia Dolson, J.J. Whistler Bear Society)

[Polar Bear Safety Brochure](#) (Parks Canada)

[Bear Awareness Camping Video](#) (Buffalo Center of the West)

["Hey Bear" Hiking in Grizzly Country Video](#) (Buffalo Center of the West)

[Summer Backcountry Camping Video Part 1-Bear safety](#) (Glacier National Park)



## Boat



[Boat and Trailer Inspection list](#)

[Pre-tow, pre-launch safety checklist](#)



# Courses

- Safety Orientation Video
- Staying Safe in Bear Country
- Chainsaw Training
- ATV Training
- First Aid Training
- Boat Operation
- Snow Machine Operation
- Aviation Safety



# Upcoming Courses

- Snowmachine training in Palmer this Saturday
- Wilderness First Aid in Yellowknife in June
- Cold Weather Survival in Yellowknife in April
- Wilderness First Aid training in Fairbanks this summer

# Fairbanks Logistics Hub

- Alaska Auto Rental
  - Human Resources
  - Physical Facility
  - Transportation Resources Available for Rent
    - Trucks
    - ATV's
    - Snowmachines
    - Boats



# Sarah Sackett

## *Logistics Coordinator*

Starting March 1, 2016

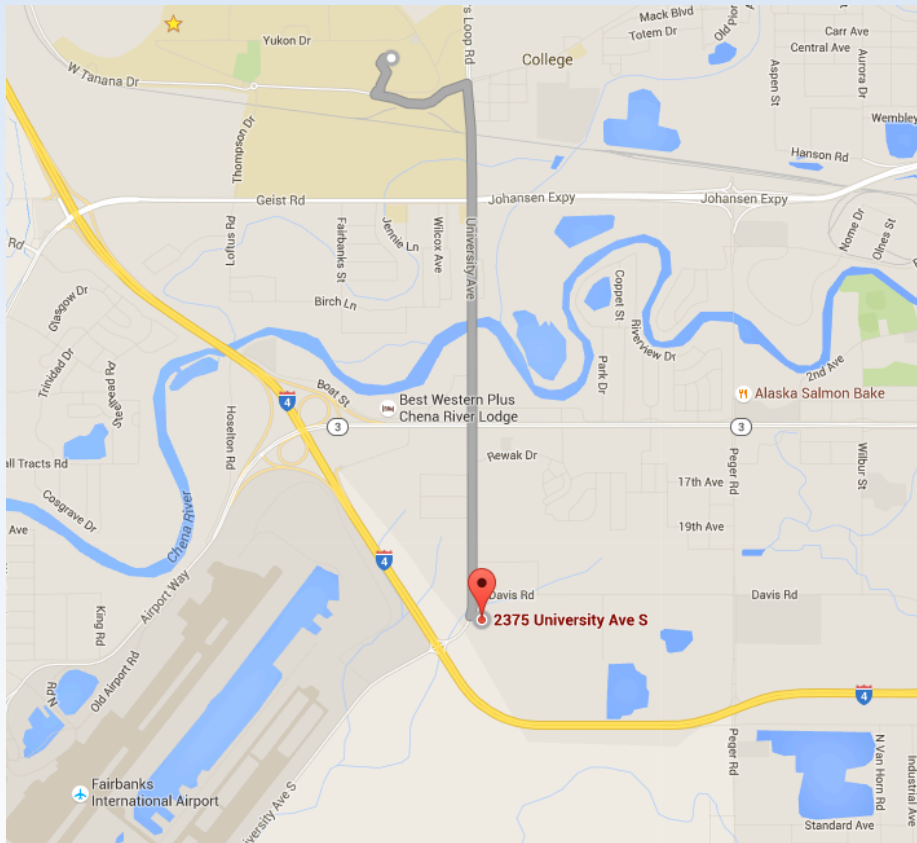
### ■ Responsibilities:

- Office and property management
- Assist with safety training, shipping and field operations
- Manage vehicle use

### ■ Experience:

- Extensive field experience including use of firearms, ATVs, snow machines, boats, and trailers.
- MBA from UAF

# Fairbanks Office/Storage Facility Opens June 1, 2016



2375 University Ave S  
Fairbanks, AK 99709

(Located 2 miles from UAF)



# Office/ Storage Facility

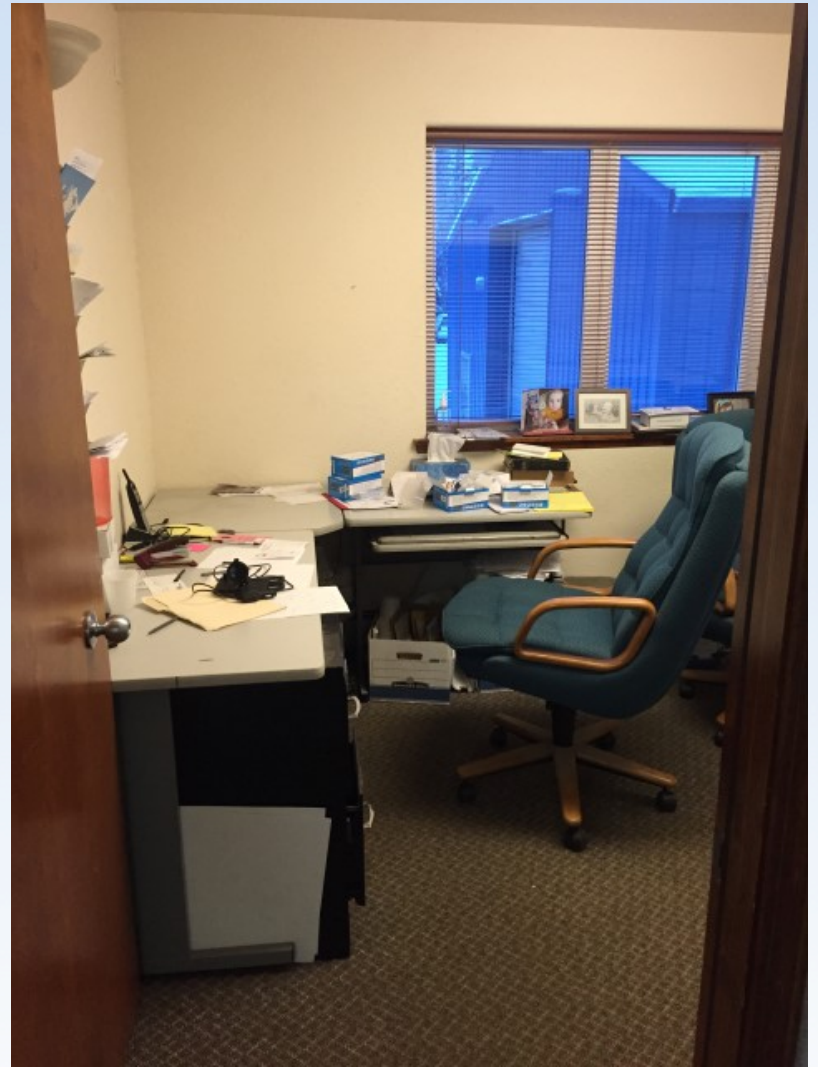
Opens June 1, 2016

- 4 Parking spaces
- 2 rooms for storage, refrigerators, cal gases, etc.
- Full time shipment receiving
  - *Special arrangements required for shipments over 50 lbs.*
  - *Please let office know of shipments prior to arrival*











[safety@ecc.nasa.gov](mailto:safety@ecc.nasa.gov)





# Project Vehicle

- 2015 F-150 w/ cap
- Taking reservations now for use beginning in June 2016
  - Email Leanne Kendig [leanne.kendig@nasa.gov](mailto:leanne.kendig@nasa.gov)

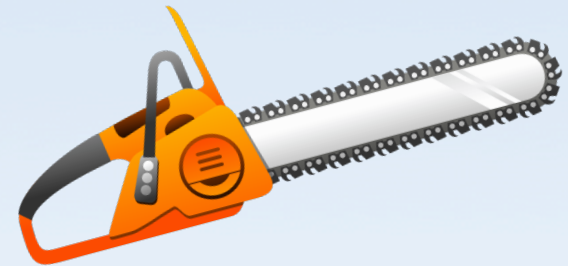




# Other Field Support

*Taking reservations now for use beginning in June 2016 (Otherwise use based on availability)*

- Satellite phones (3)
- SPOT devices (2)
- Chainsaw (1)
- Generator (1)
- First aid kit/trauma kit (3)
- Project vehicle safety bag (3)
- Tower Technician – 1 day/month



# Vehicle Safety Bag

- Basic tools
- Bear deterrents
- Fire starters
- Headlamp/ flashlight
- Batteries - AA and AAA
- Emergency signaling and navigation
- First aid/trauma kit
- Emergency food
- Water purifying system
- Webbing/chain/rope
- Emergency blanket



# NWT Logistics Hub

- Logistics office/storage
- Shipping/receiving
- Vehicle lease for 4-6 weeks
  - *Taking reservations now for use beginning June 2016*
- Possible lodging assistance



# NWT Support Equipment

- Satellite phone (1)
- SPOT device (1)
- First aid kits (2)
- Vehicle safety bag (2)





# Thank You

